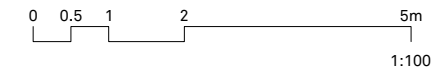
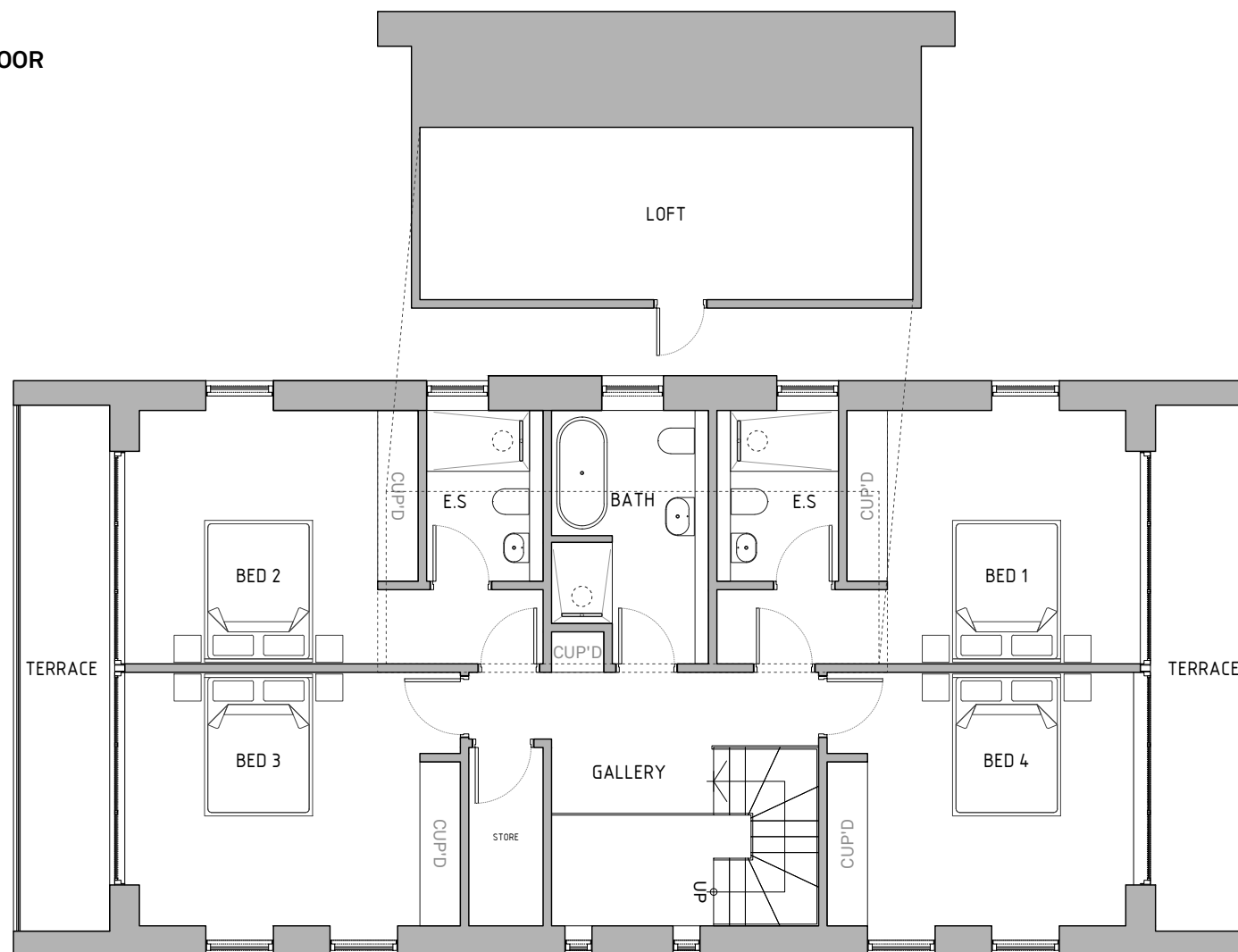


GROUND FLOOR

- Entrance Hall
- Stair
- Kitchen
- Lounge
- Dining
- Living
- Study/Guest Room
- Utility/Boot Room
- Store
- WC
- Plant/Services Cupboard



**GA
GROUND FLOOR**



FIRST FLOOR

- Landing Gallery
- Wall Loft Access Hatch
- Bedroom 1 (master)
- Bedroom 1 En-suite
- Terrace
- Bedroom 2
- Bedroom 2 En-suite
- Terrace
- Bedroom 3
- Terrace
- Bedroom 4
- Terrace
- Family Bathroom
- Store
- LOFT
- Plant/Services/Storage

**GA
FIRST FLOOR / LOFT**

Stg. Rev.	Drw. Rev.	Description	Date
-----------	-----------	-------------	------

Revisions:

Project:

**COOKSWOOD
STOKE ST. MICHAEL**

Client:

Drawing:

**PLAN
The Executive Barn
Conventional Living**

Scale @ A3:	Drawing No.	Stage
1:100	D01.100.00	05
Drawn:		00
DATE:		00
AUG 2021		

Any discrepancy or query concerning this drawing should be referred to the Lomax Design & Build Ltd. © Copyright : Lomax Design & Build Ltd.